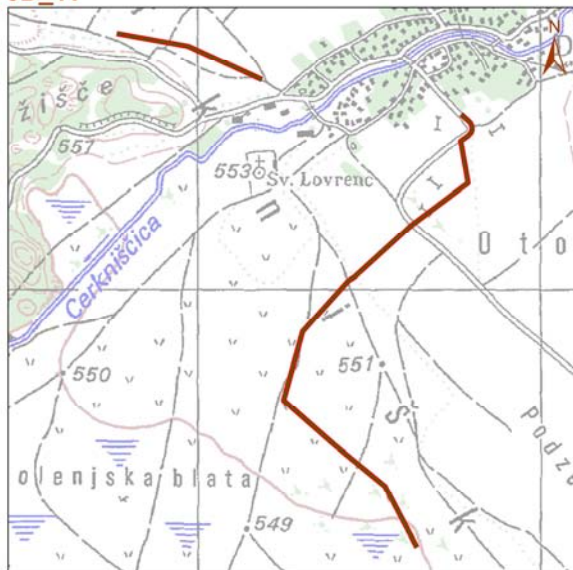


Priloga 7: Posamezne ploskve, predstavljene na karti 1:25.000 (©Geodetska uprava RS), z vrisanim potekom transektov v letu 2008 (rdeča črta) in 2012 (zelena črta); praviloma je ta potek enak; spremembe transektov (in leta spremembe), so bile naslednje: OF_120 - 2011 (v 2012 ni bila popisana, transekt ni prikazan), 0M_121 - 2011 (v 2012 ni popisana, transekt ni prikazan), 0R_179 - 2011 0R_1 - 2009, 0D_15 - 2009, 0Z_5 - 2009.

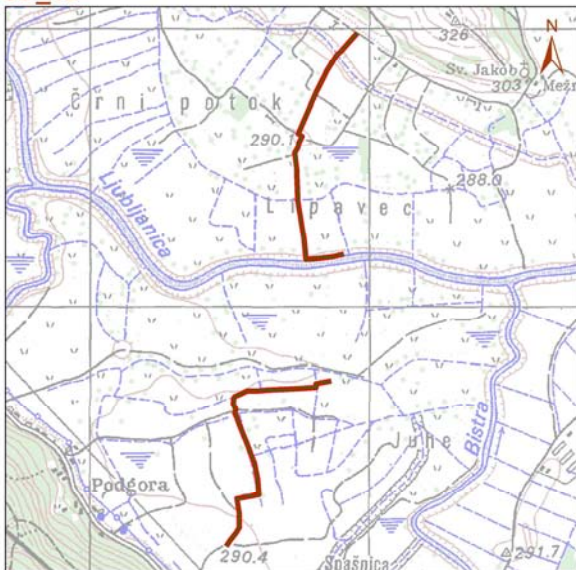
0D_3



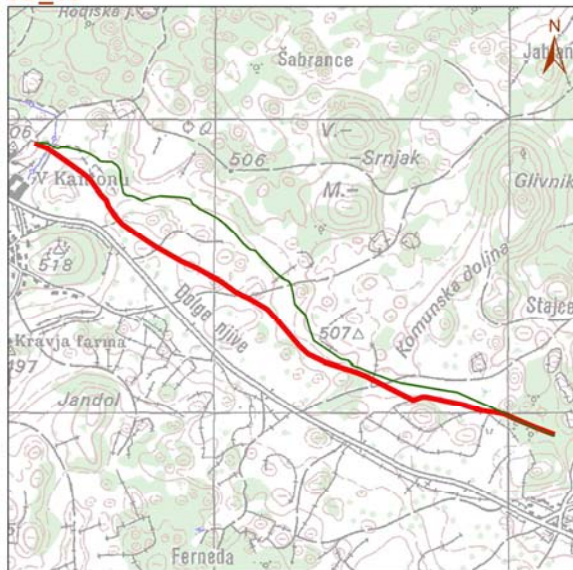
0D_11



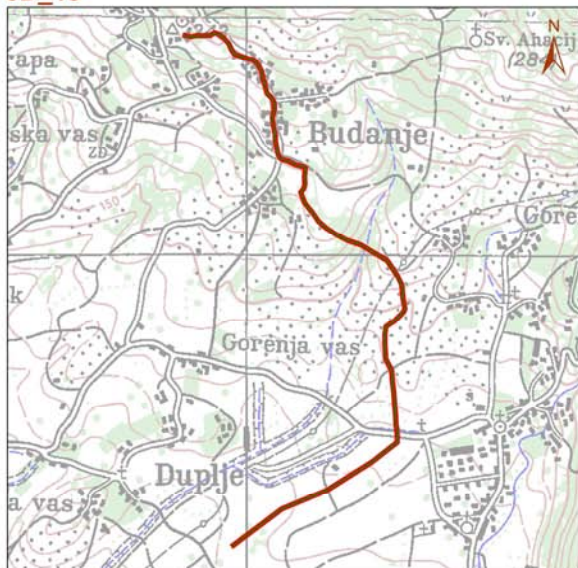
0D_12



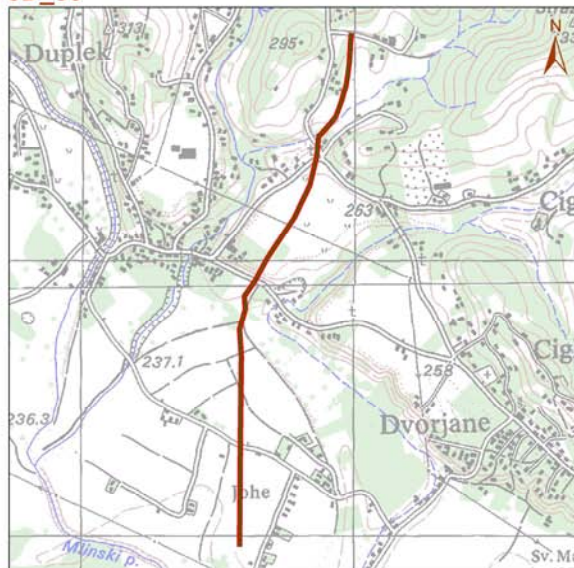
0D_15



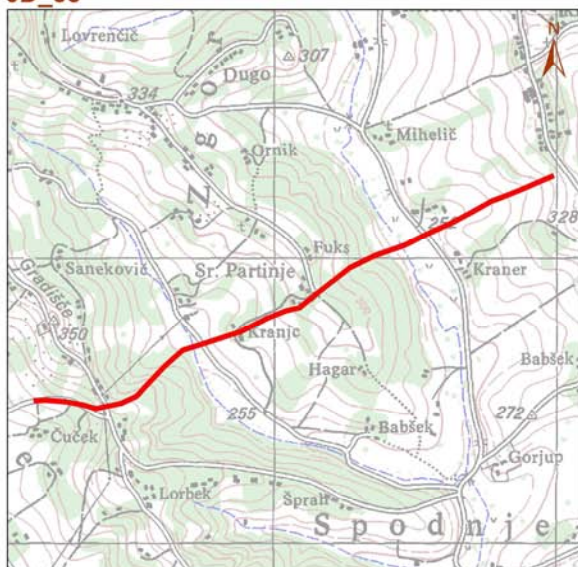
OD_18



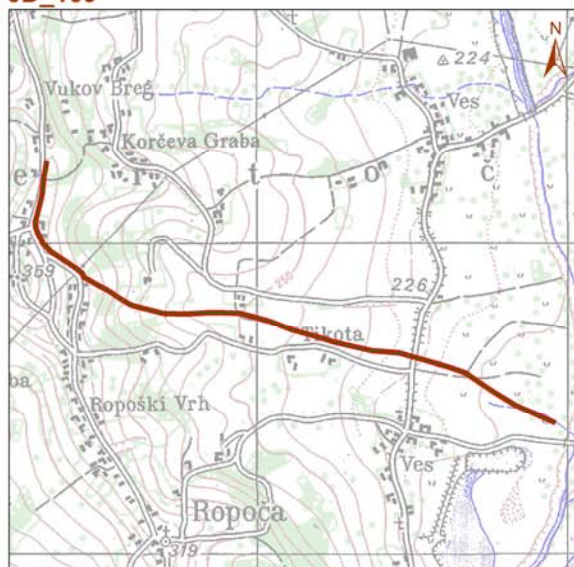
OD_83



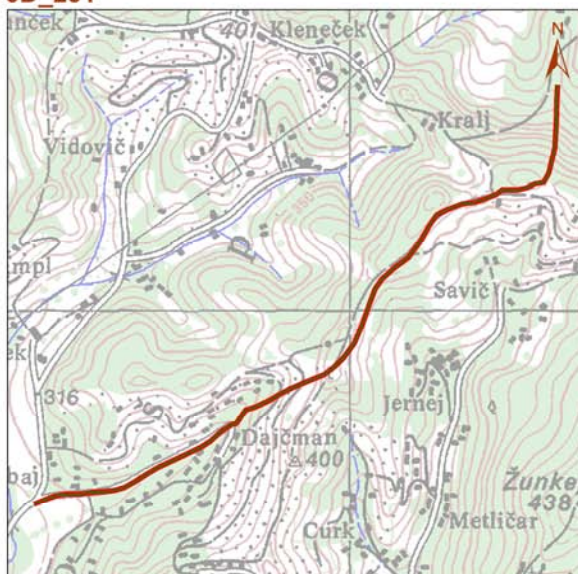
OD_88



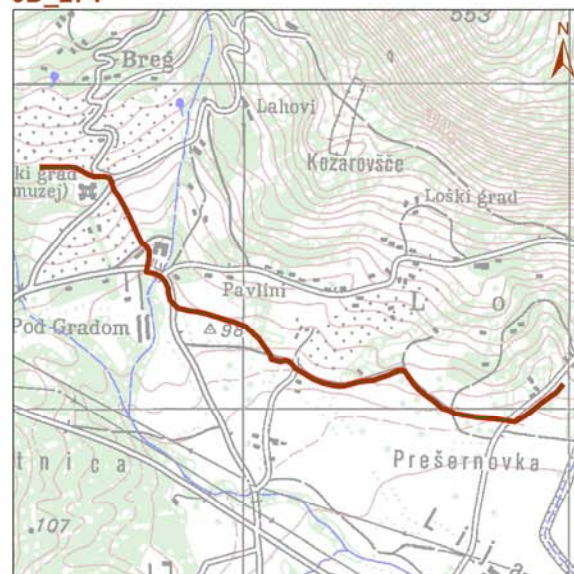
OD_169



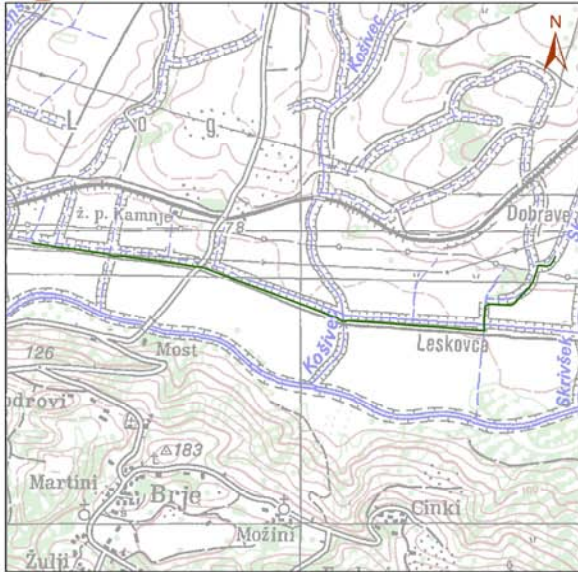
OD_231



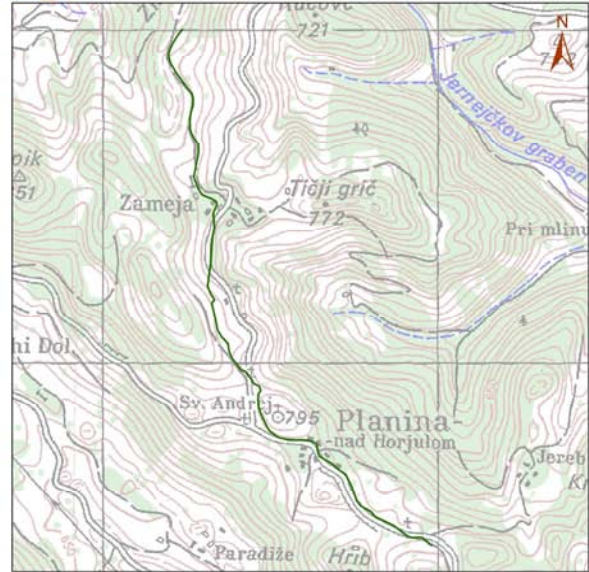
OD_274



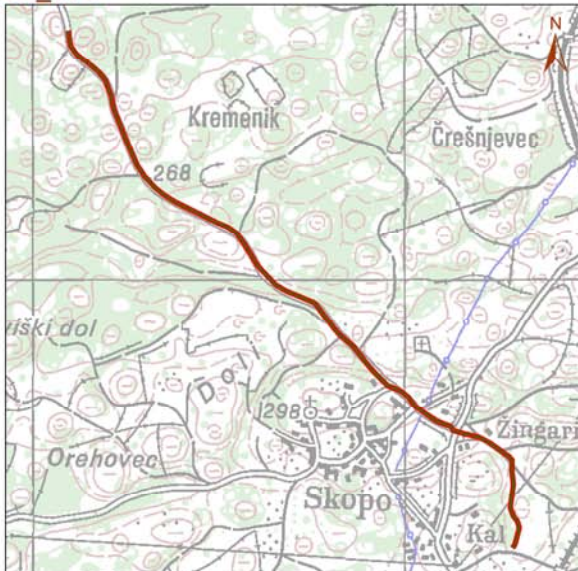
OD_278



OD_286



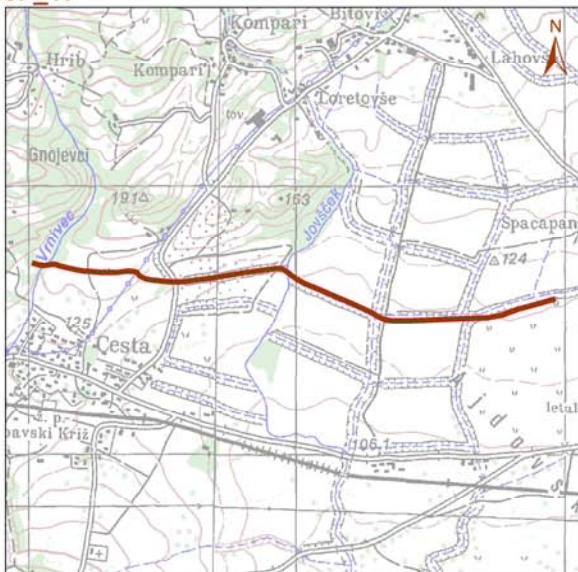
OD_405



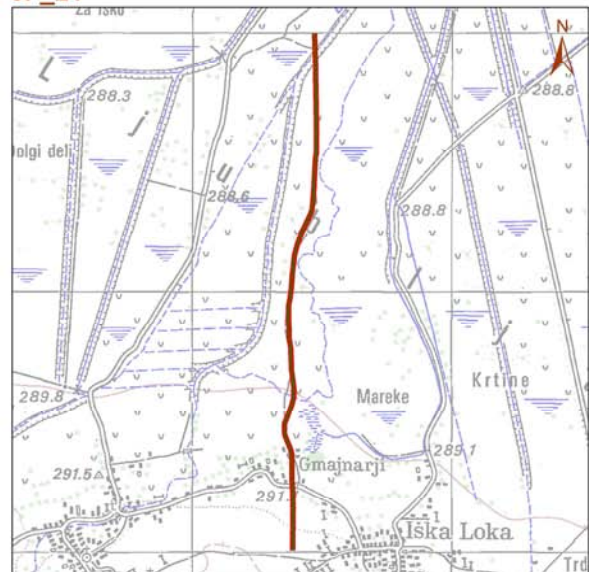
OF_8



OF_17



OF_21



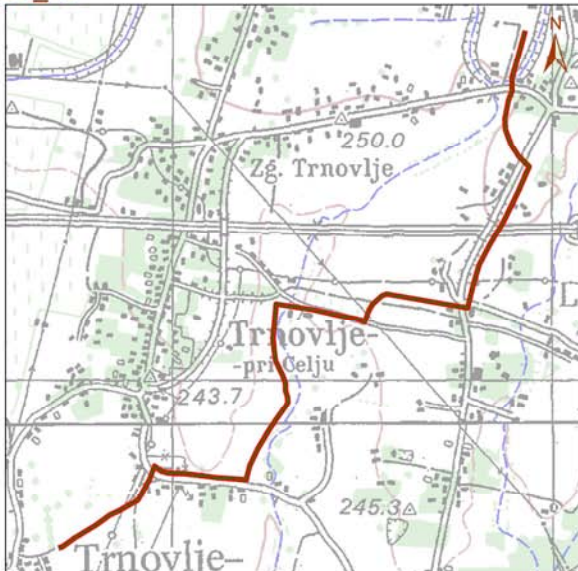
OF_32



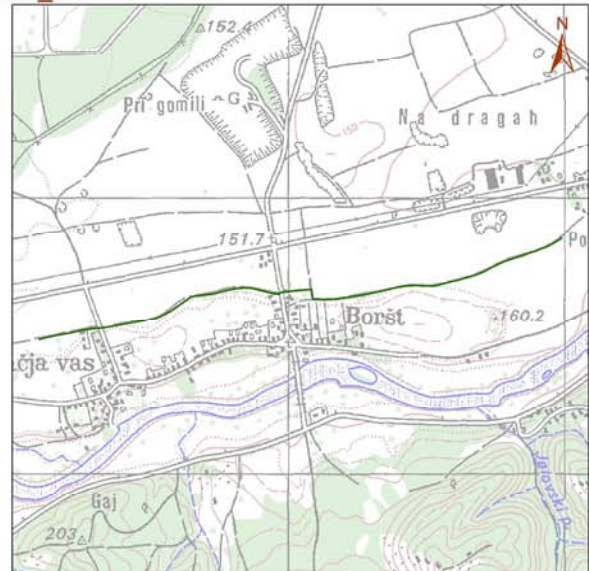
OF_35



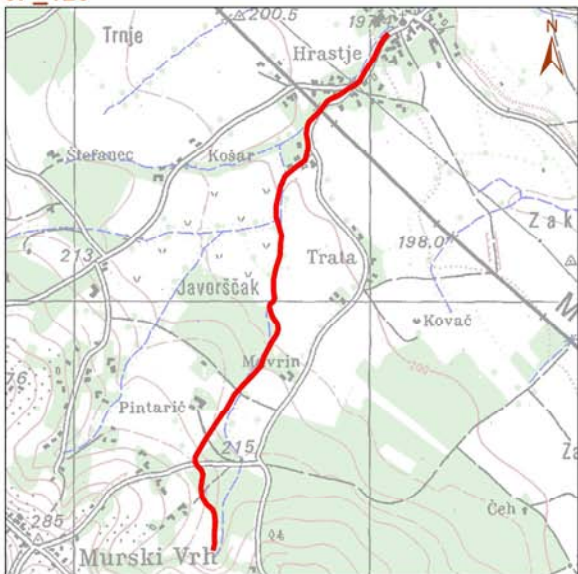
OF_55



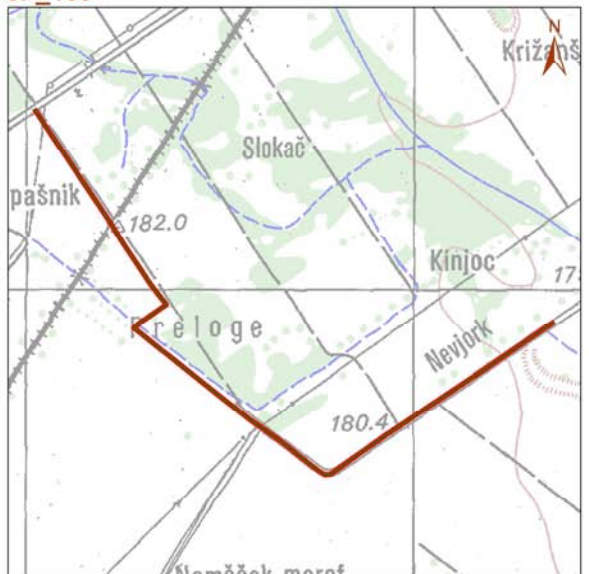
OF_62



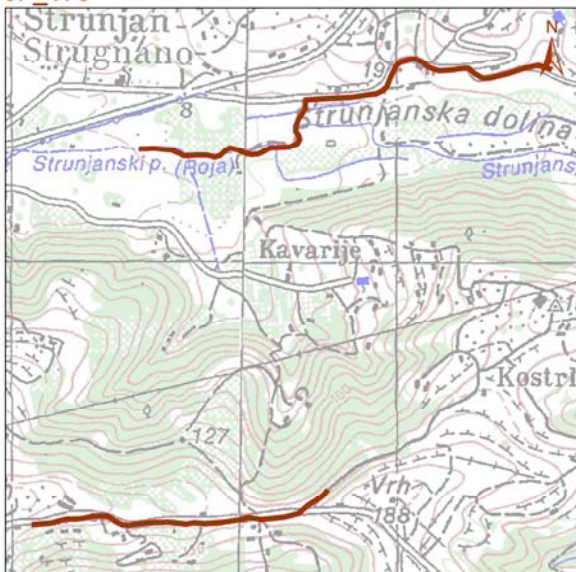
OF_120



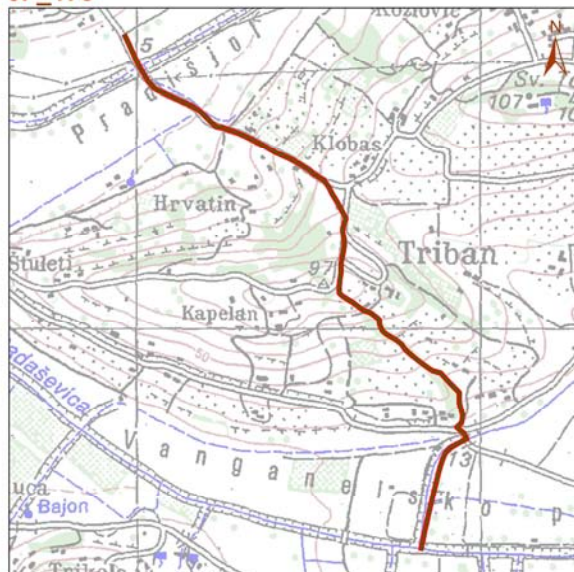
OF_139



OF_176



OF_178



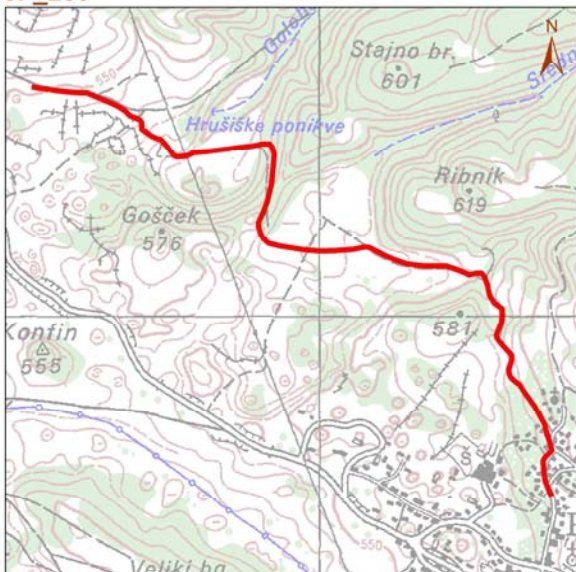
OF_277



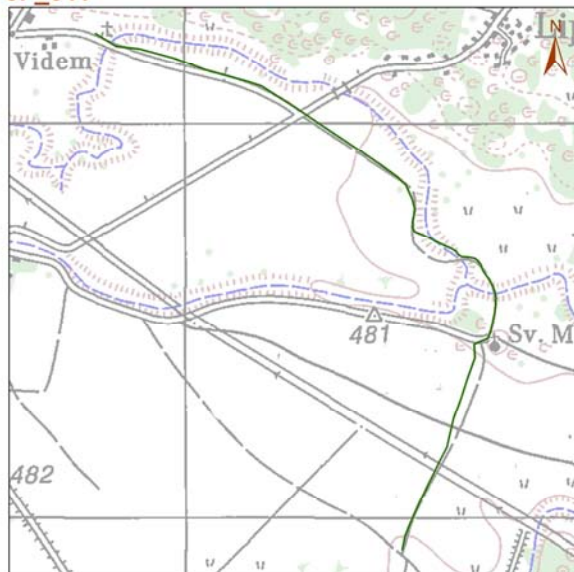
OF_281



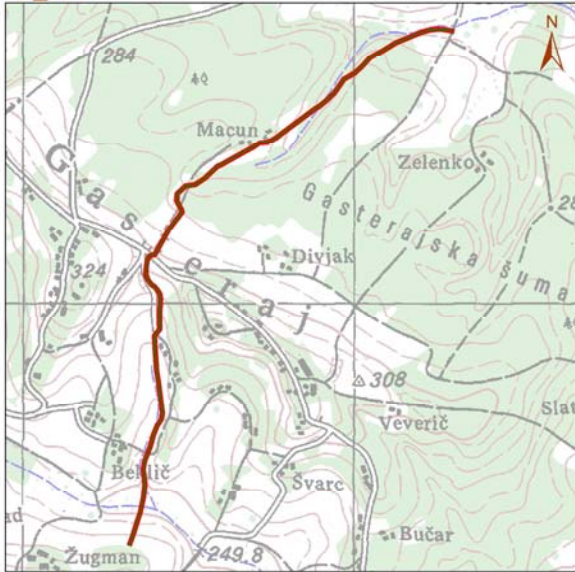
OF_283



OF_311



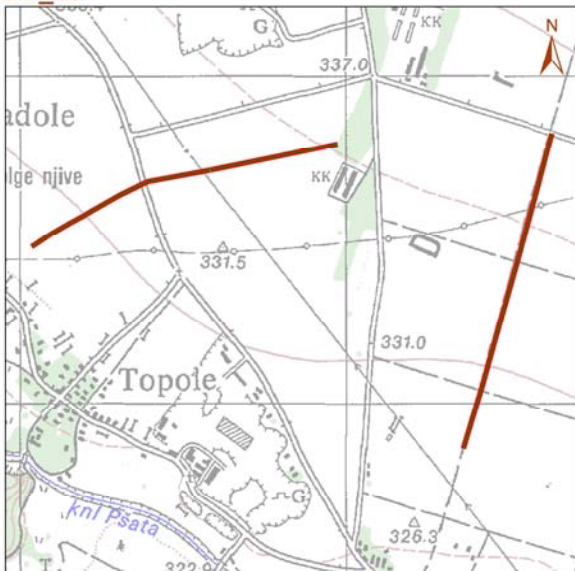
OF_379



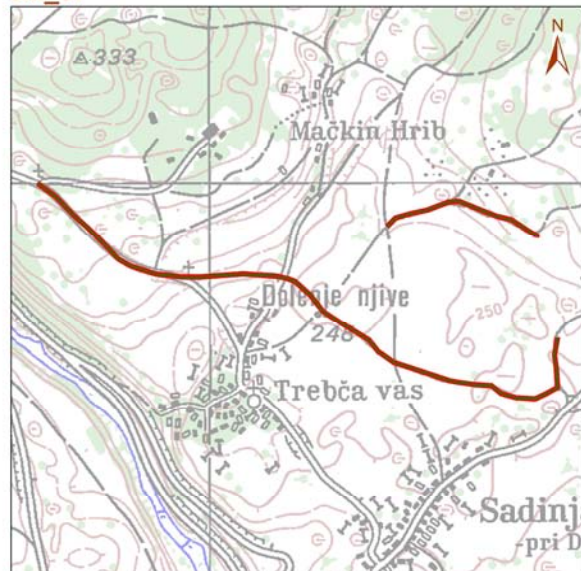
OM_4



OM_25



OM_57



OM_71



OM_89



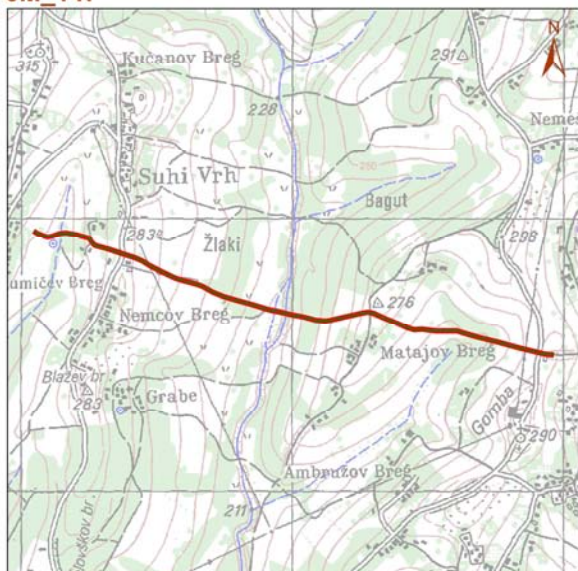
OM_121



OM_142



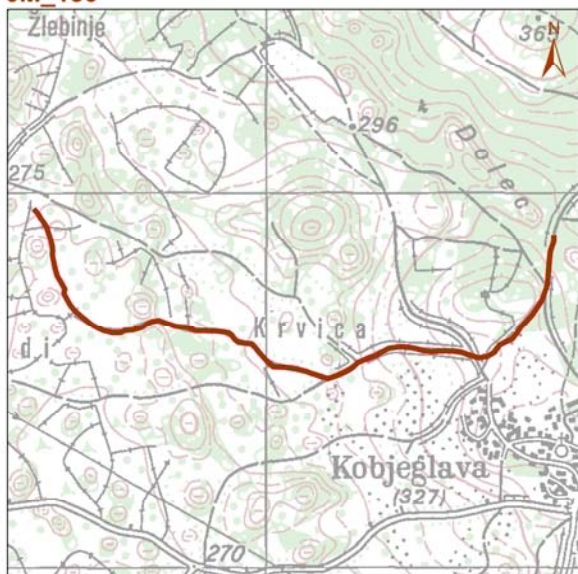
OM_147



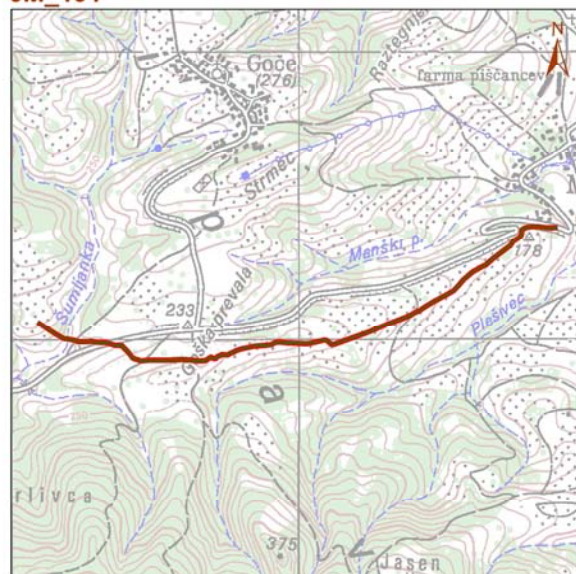
OM_170



OM_180



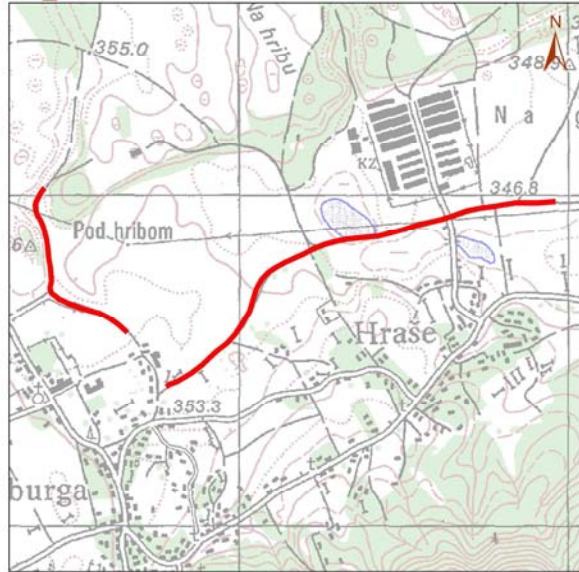
OM_191



OM_192



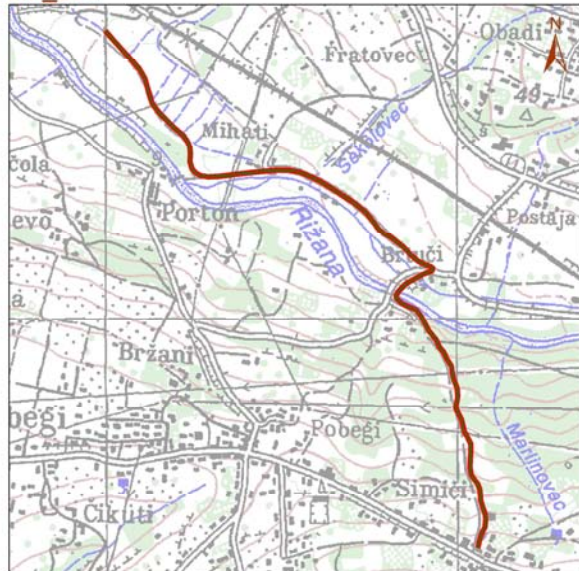
OM_202



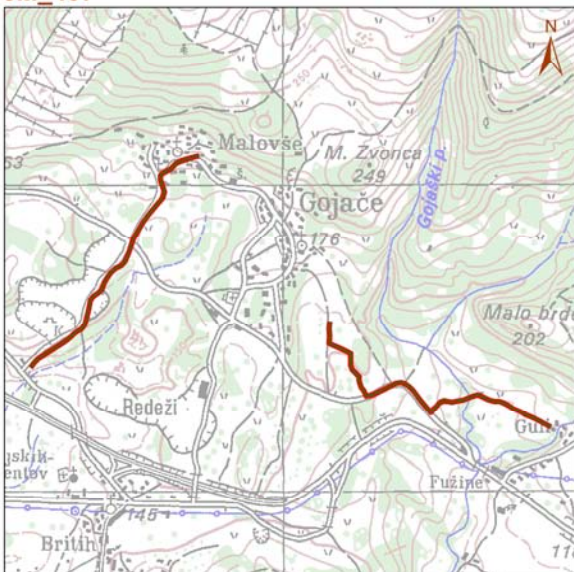
OM_273



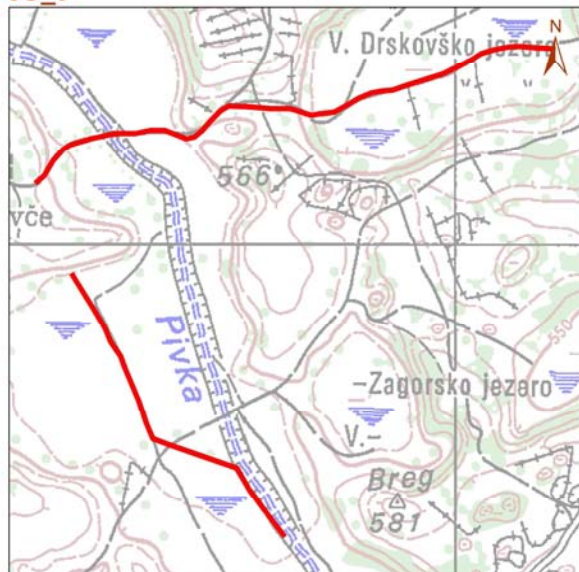
OM_276



OM_407



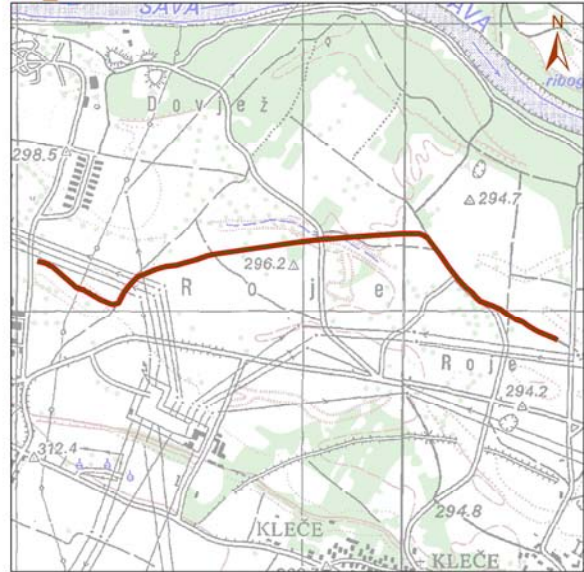
OO_9



00_22



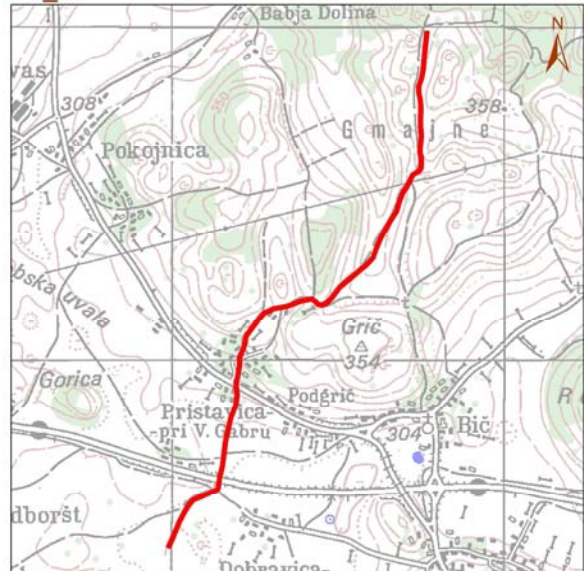
00_23



00_36



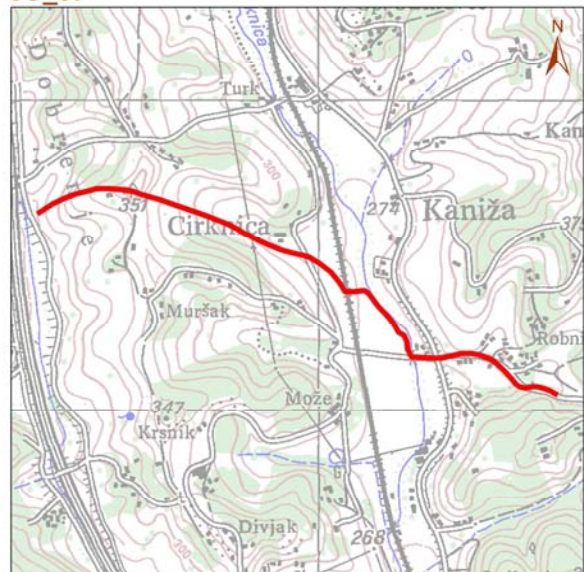
00_59



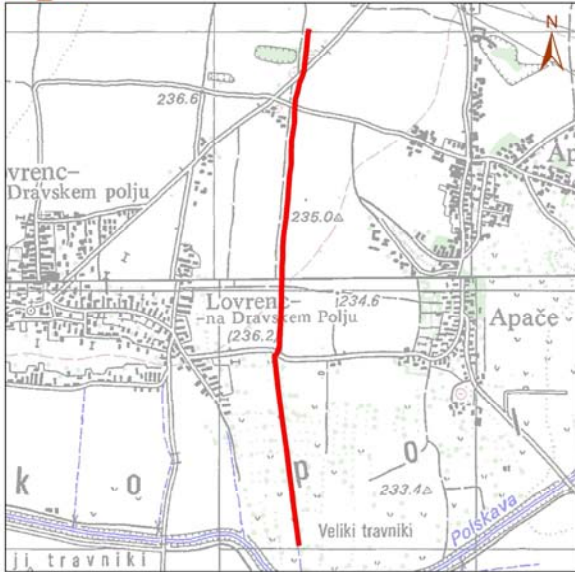
00_79



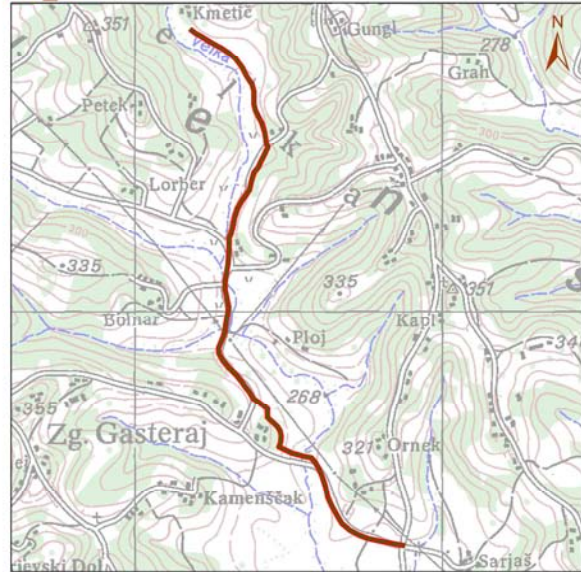
00_87



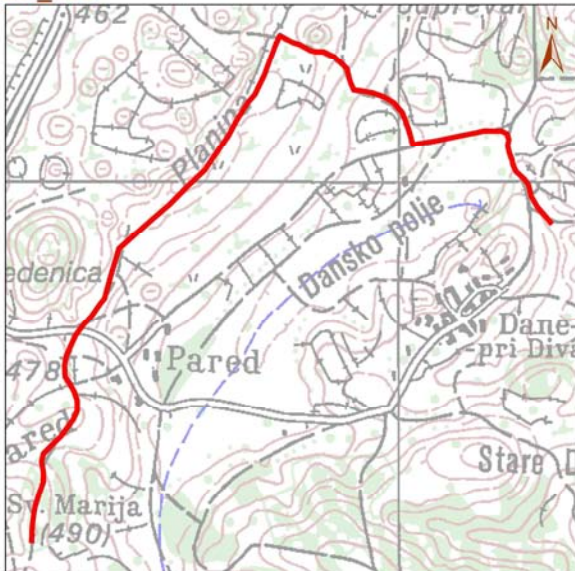
00_92



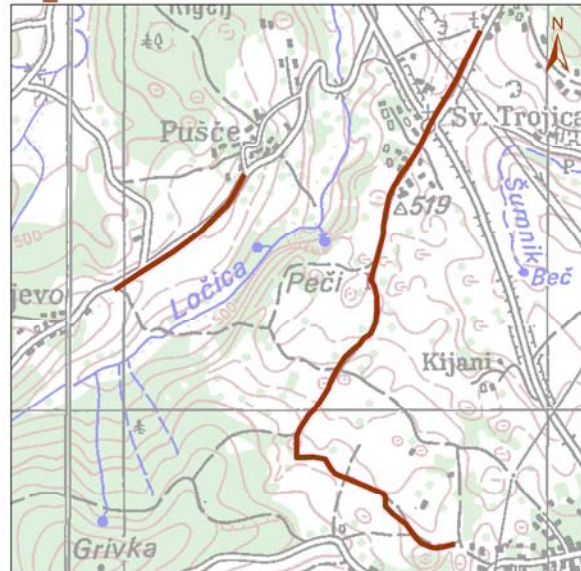
00_101



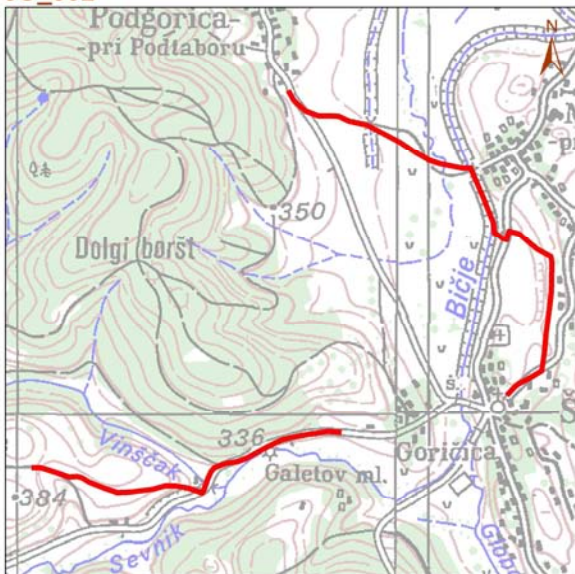
00_280



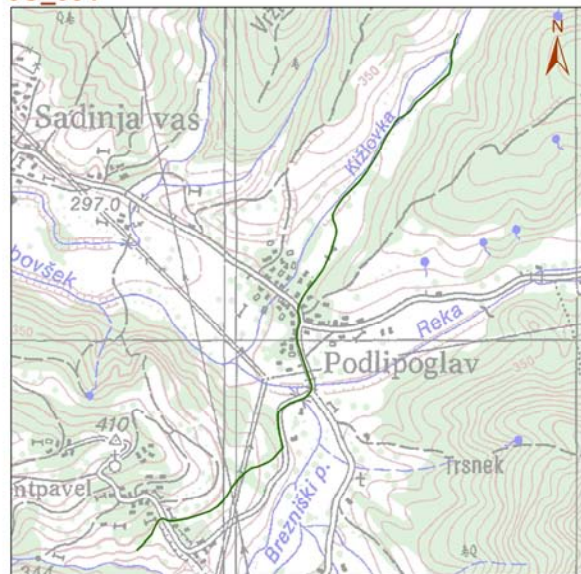
00_301



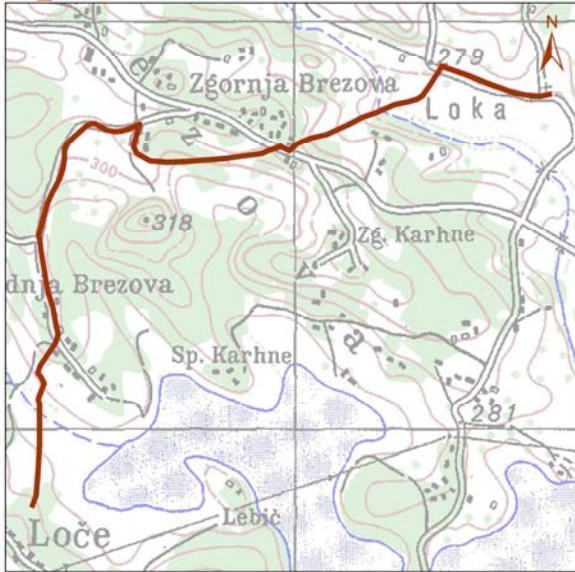
00_302



00_304



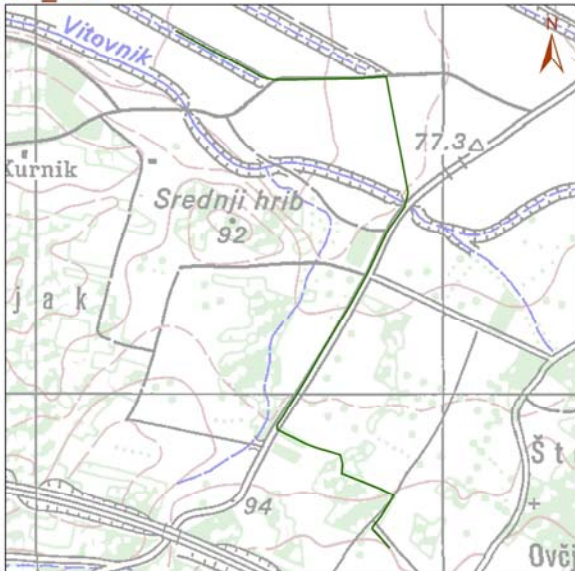
OO_345



OO_362



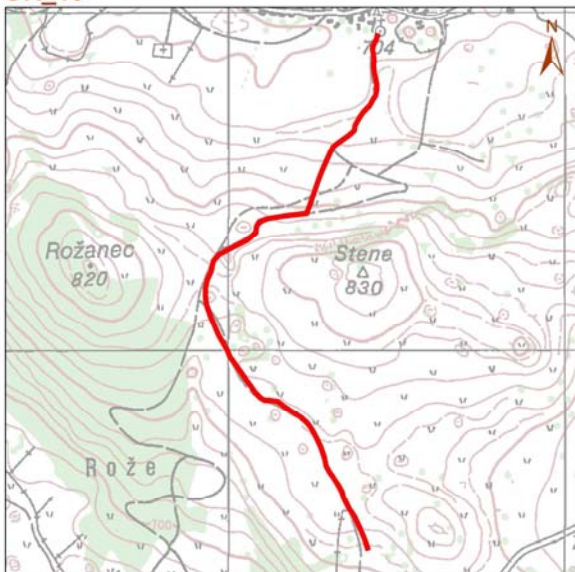
OO_406



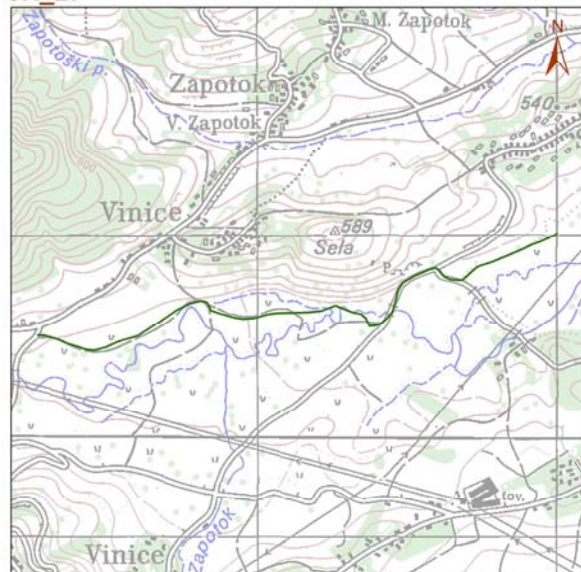
OR_1



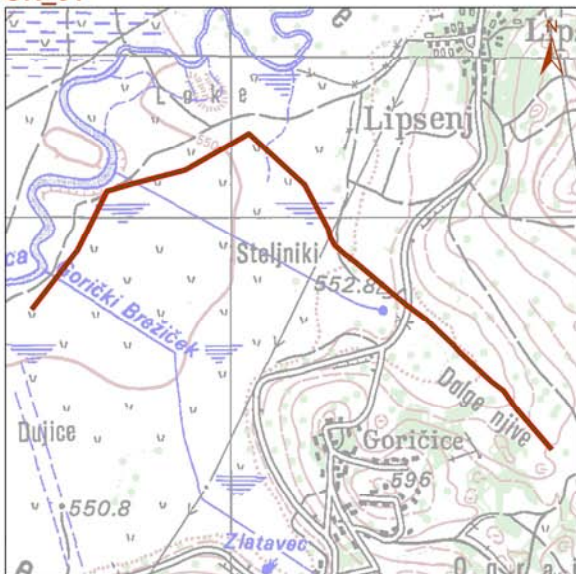
OR_10



OR_27



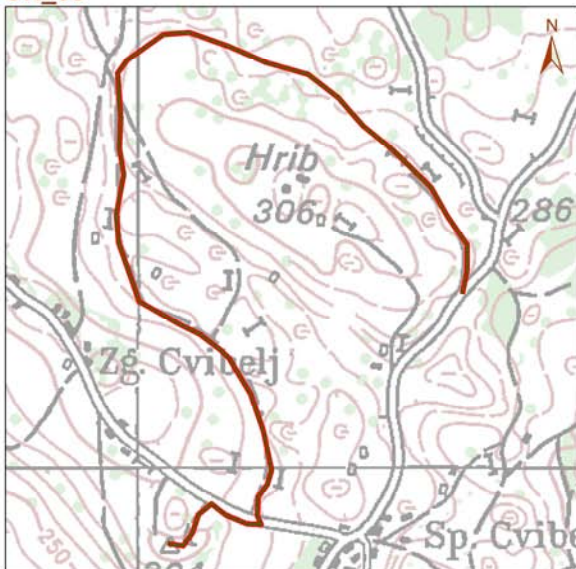
OR_31



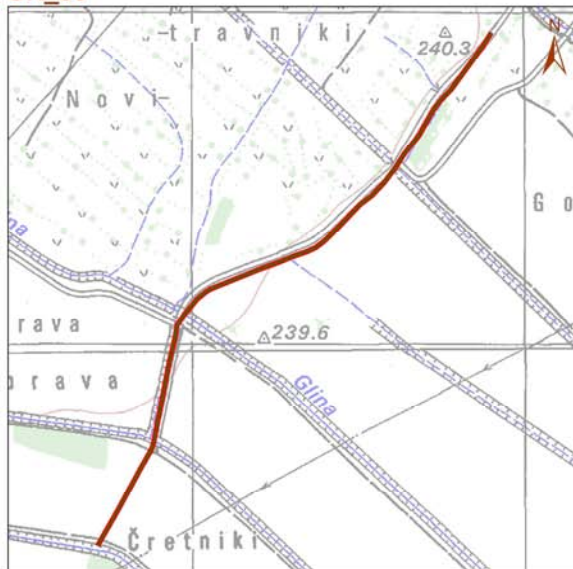
OR_34



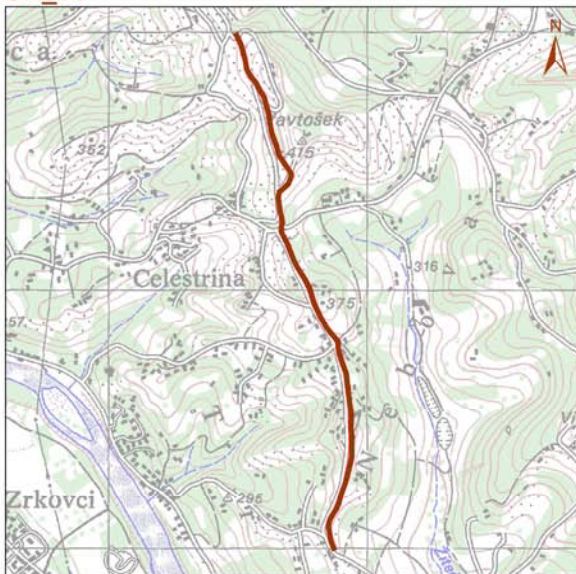
OR_58



OR_80



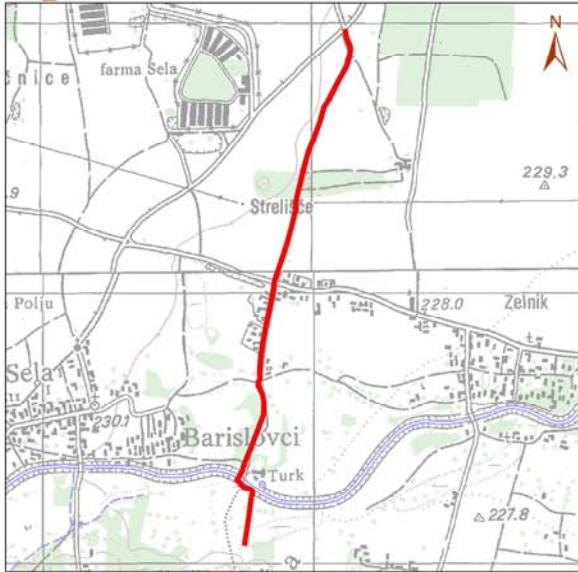
OR_84



OR_90



OR_94



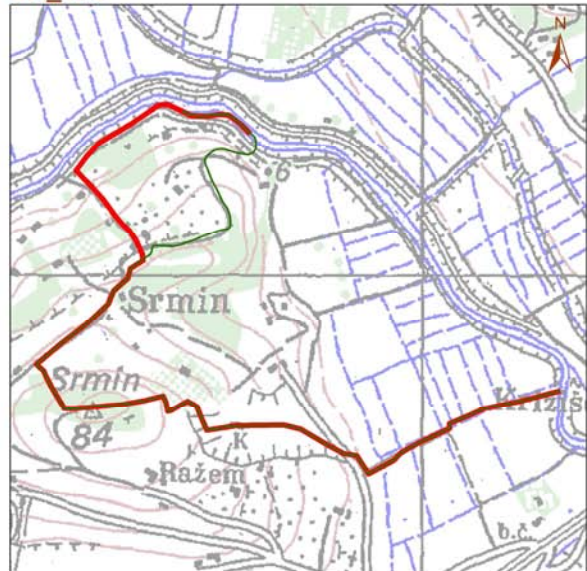
OR_122



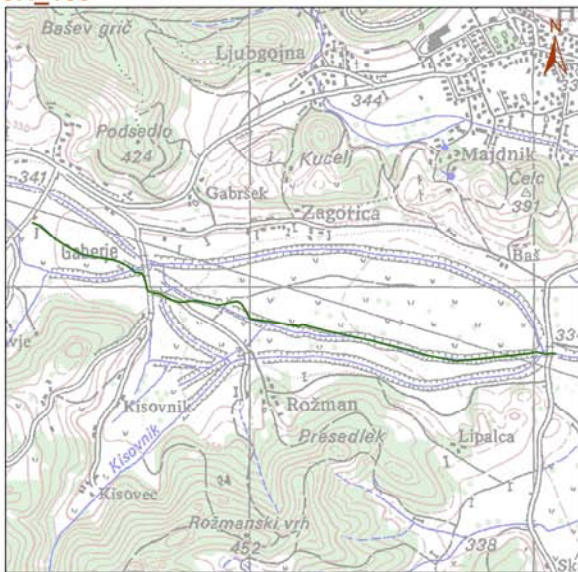
OR_158



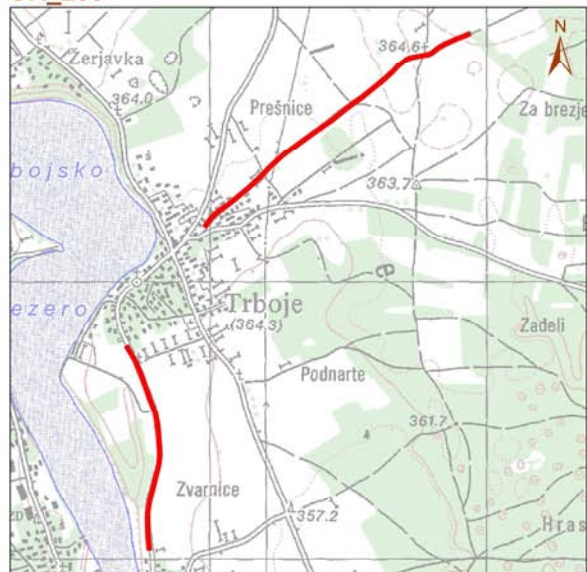
OR_179



OR_189



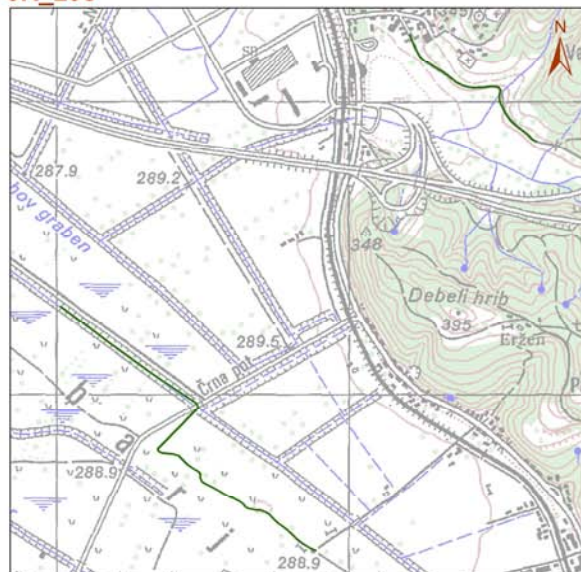
OR_203



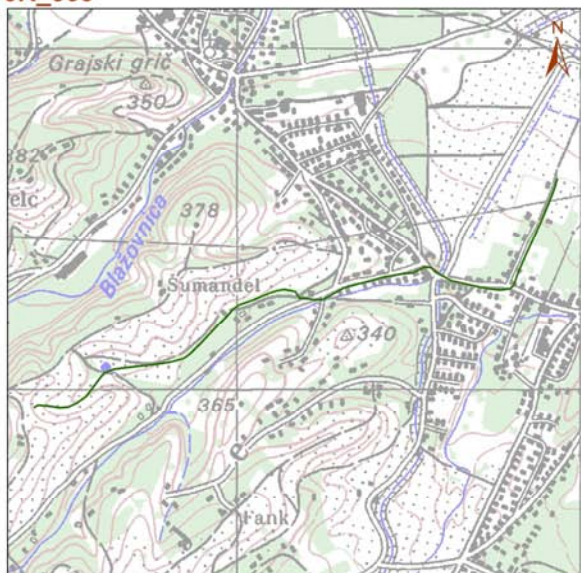
OR_234



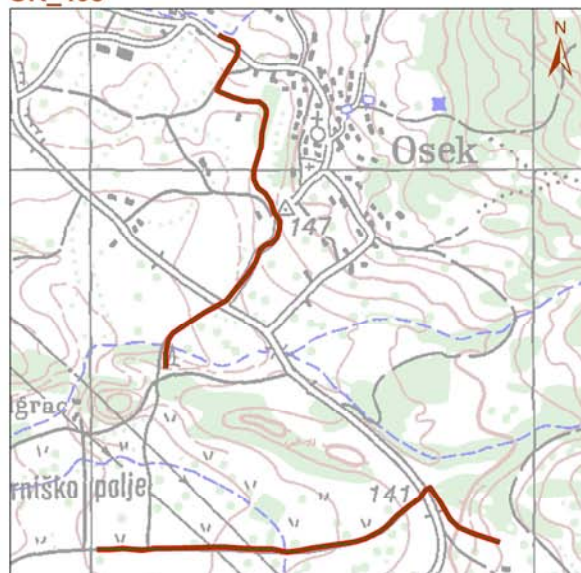
OR_298



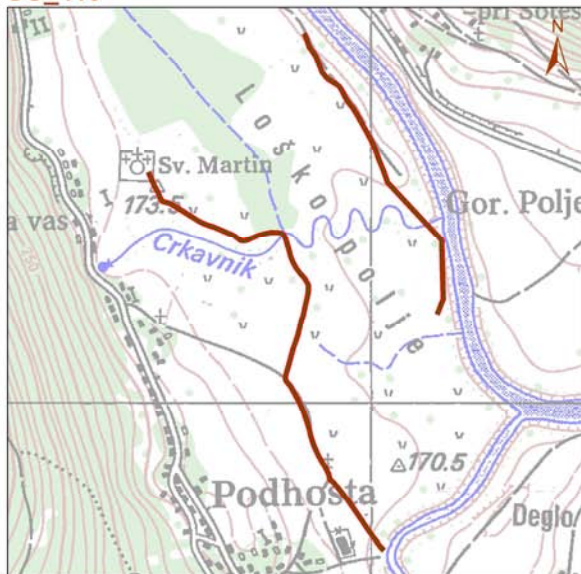
OR_363



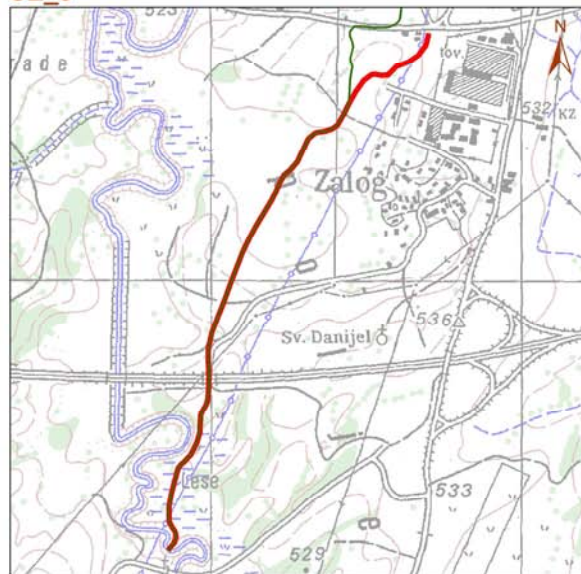
OR_408



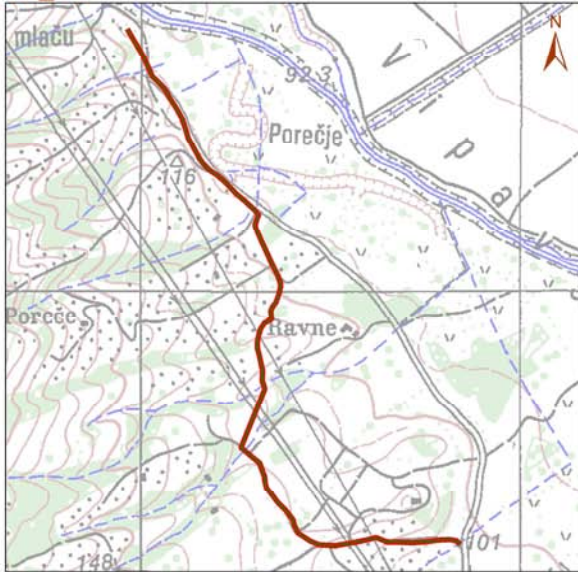
OU_410



OZ_5



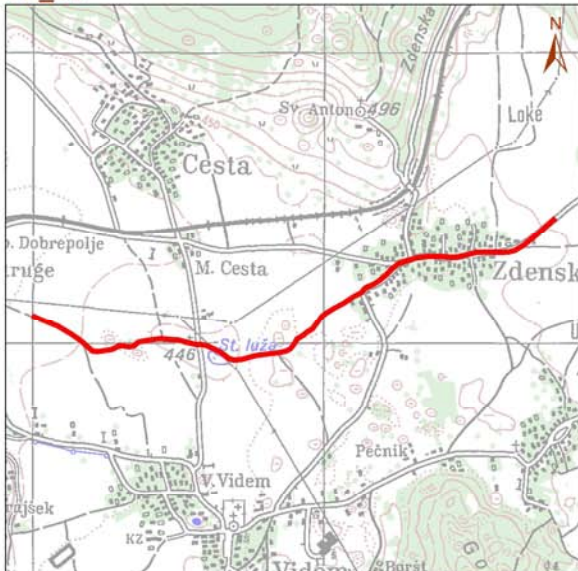
OZ_16



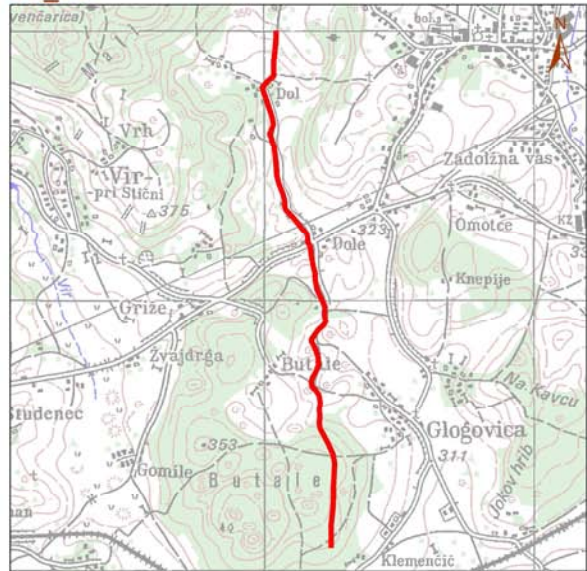
OZ_24



OZ_28



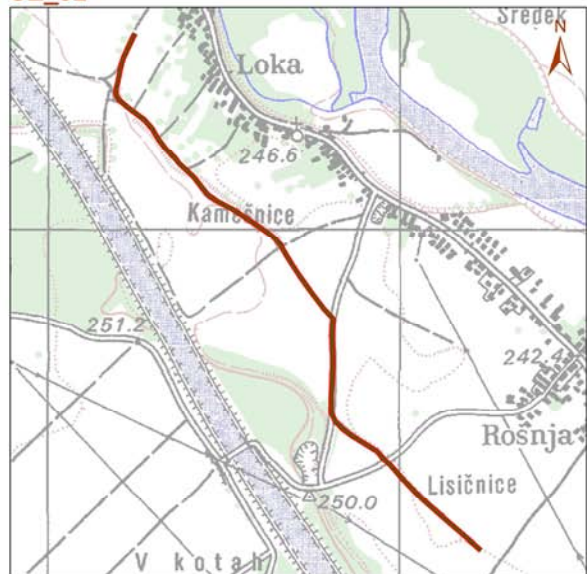
OZ_29



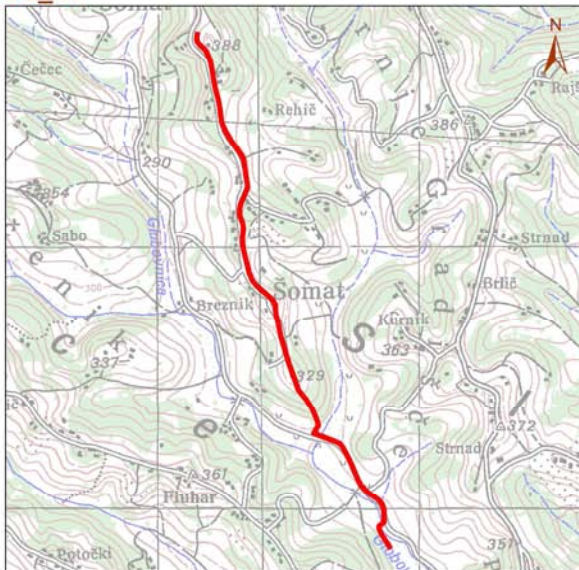
OZ_81



OZ_82



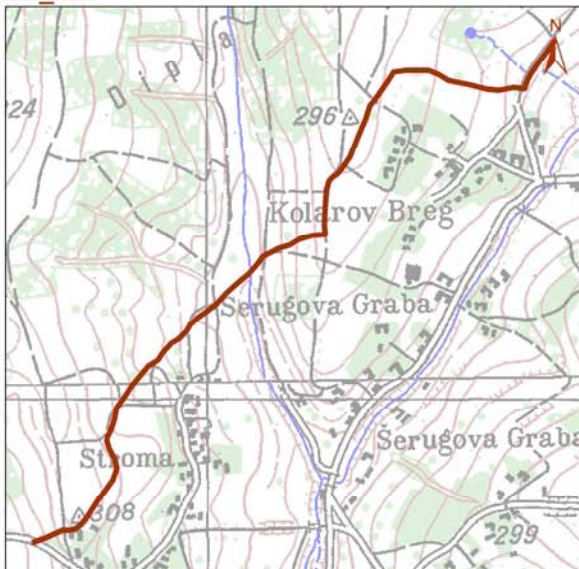
OZ_91



OZ_123



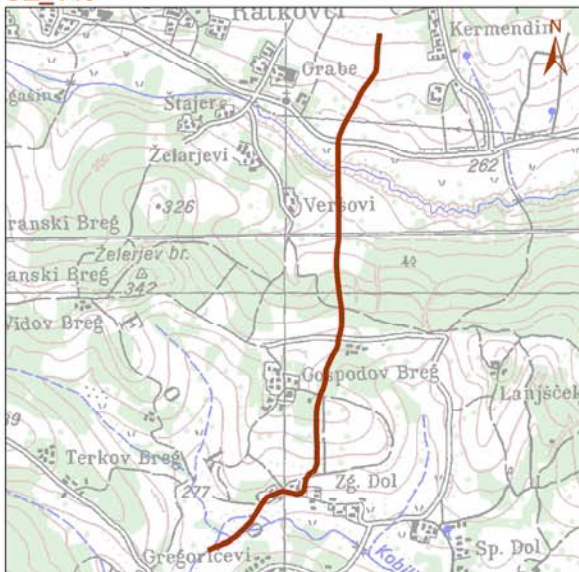
OZ_129



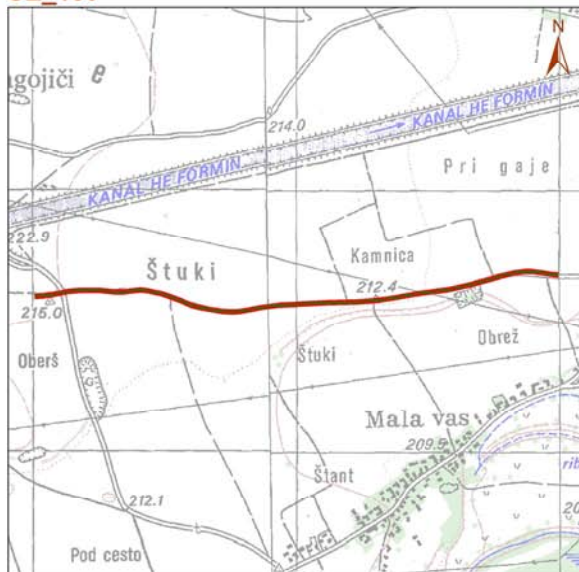
OZ_138



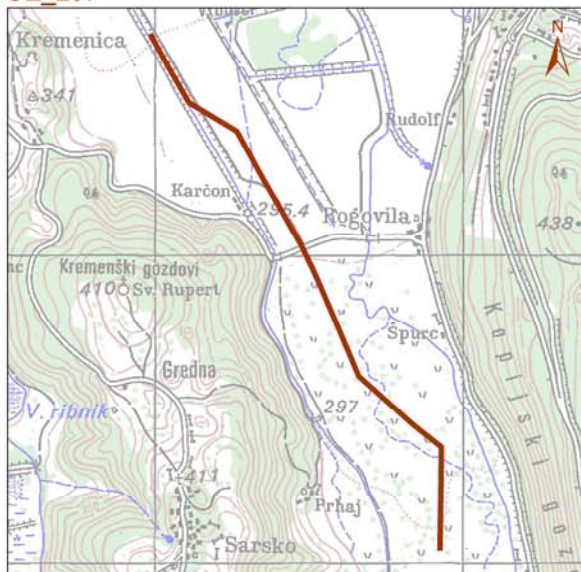
OZ_148



OZ_159



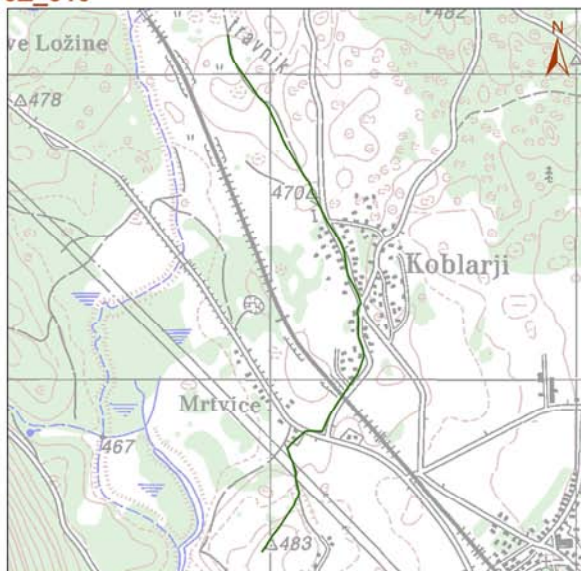
OZ_297



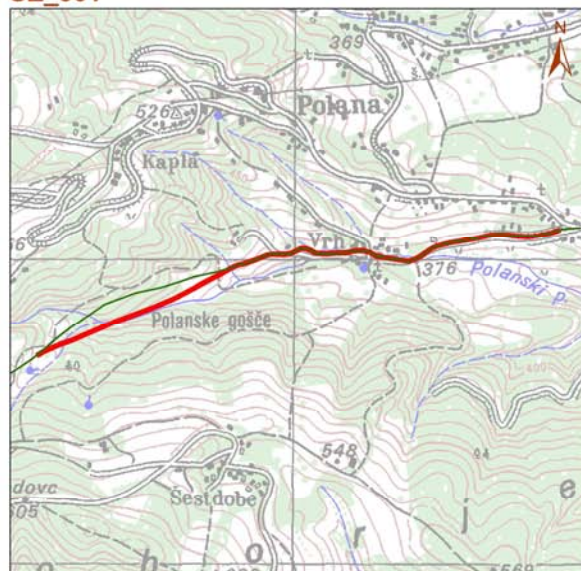
OZ_300



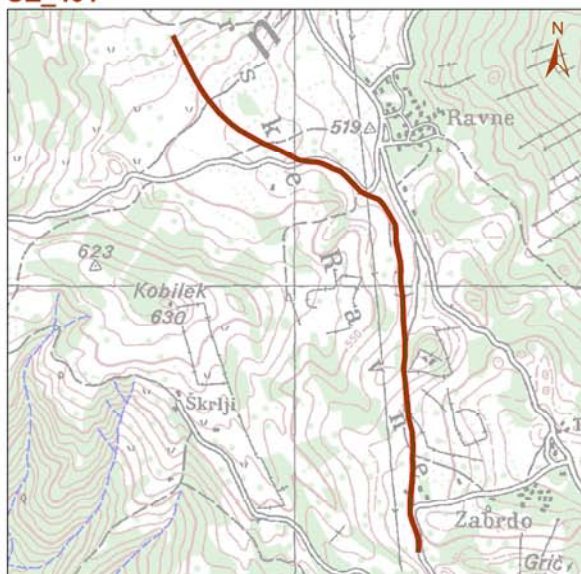
OZ_310



OZ_361



OZ_401



Priloga 8: Popisano število parov (maksimum dveh popisov), po lastnostih ploskev, za obdobje 2007-2012.

din						
Vrsta	2007	2008	2009	2010	2011	2012
<i>Acrocephalus palustris</i>	47	88	74	73	40	45
<i>Alauda arvensis</i>	84	131	105	69	51	58
<i>Anthus trivialis</i>	77	86	98	70	71	58
<i>Carduelis cannabina</i>	16	32	20	16	15	17
<i>Carduelis carduelis</i>	25	50	57	39	26	48
<i>Columba oenas</i>	2	13	16	8	8	6
<i>Columba palumbus</i>	21	55	39	39	41	36
<i>Emberiza calandra</i>	22	54	51	14	10	19
<i>Emberiza cirrus</i>		10	5	11	7	7
<i>Emberiza citrinella</i>	56	87	74	63	51	67
<i>Falco tinnunculus</i>	11	20	20	16	18	19
<i>Hirundo rustica</i>	86	160	122	96	125	112
<i>Jynx torquilla</i>	13	29	30	25	27	28
<i>Lanius collurio</i>	43	104	79	60	44	63
<i>Lullula arborea</i>	10	32	23	11	9	5
<i>Luscinia megarhynchos</i>	25	38	50	55	56	37
<i>Motacilla flava</i>	11	12	13	15	14	27
<i>Passer montanus</i>	48	153	173	105	139	83
<i>Phoenicurus phoenicurus</i>	3	2	3	1	4	3
<i>Picus viridis</i>		6	9	5	4	4
<i>Saxicola rubetra</i>	47	70	73	50	52	40
<i>Saxicola torquatus</i>	17	38	37	26	34	35
<i>Serinus serinus</i>	23	55	42	34	24	32
<i>Streptopelia turtur</i>	2	11	12	10	6	1
<i>Sturnus vulgaris</i>	103	316	314	228	173	214
<i>Sylvia communis</i>	41	70	94	57	58	51
<i>Upupa epops</i>	1	3	4		1	1
<i>Vanellus vanellus</i>	3	5	2	4	23	21

pan						
Vrsta	2007	2008	2009	2010	2011	2012
<i>Acrocephalus palustris</i>	48	49	35	26	32	12
<i>Alauda arvensis</i>	59	116	101	88	85	68
<i>Anthus trivialis</i>	13	7	9	6	2	3
<i>Carduelis cannabina</i>	14	48	19	14	13	21
<i>Carduelis carduelis</i>	21	44	34	29	24	35
<i>Columba oenas</i>	5	10	8	19	15	16
<i>Columba palumbus</i>	30	81	64	73	68	68
<i>Emberiza calandra</i>	2	3	3	8		2
<i>Emberiza citrinella</i>	55	131	95	89	70	82
<i>Falco tinnunculus</i>	14	36	28	31	31	28
<i>Galerida cristata</i>	8	46	25	20	16	31
<i>Hirundo rustica</i>	141	209	132	125	133	144
<i>Jynx torquilla</i>	14	18	20	10	10	12
<i>Lanius collurio</i>	44	68	52	44	25	27
<i>Lullula arborea</i>		6	2	1		2
<i>Luscinia megarhynchos</i>	19	16	19	24	28	18
<i>Motacilla flava</i>	2	21	18	16	22	15
<i>Passer montanus</i>	125	341	212	208	218	201
<i>Phoenicurus phoenicurus</i>	18	22	24	13	12	13
<i>Picus viridis</i>	14	23	20	21	20	21
<i>Saxicola rubetra</i>		1	1		3	
<i>Saxicola torquatus</i>	65	87	78	70	72	81
<i>Serinus serinus</i>	49	111	76	78	58	48
<i>Streptopelia turtur</i>	7	20	17	13	6	16
<i>Sturnus vulgaris</i>	362	497	364	277	347	251
<i>Sylvia communis</i>	16	40	40	39	30	22
<i>Upupa epops</i>		14	7	2	2	5
<i>Vanellus vanellus</i>	16	44	21	29	27	26

alp						
Vrsta	2007	2008	2009	2010	2011	2012
<i>Acrocephalus palustris</i>	16	20	16	10	11	14
<i>Alauda arvensis</i>	12	36	29	27	22	33
<i>Anthus trivialis</i>		7	4	9	4	10
<i>Carduelis cannabina</i>	2	1	4	1	1	
<i>Carduelis carduelis</i>	16	20	13	11	14	49
<i>Columba oenas</i>		2		1	3	12
<i>Columba palumbus</i>	11	24	23	19	20	28
<i>Emberiza calandra</i>				1		
<i>Emberiza cirrus</i>		1				
<i>Emberiza citrinella</i>	31	56	50	49	48	67
<i>Falco tinnunculus</i>	10	26	11	15	16	17
<i>Galerida cristata</i>						1
<i>Hirundo rustica</i>	73	69	44	48	49	98
<i>Jynx torquilla</i>		11	10	9	5	13
<i>Lanius collurio</i>	6	14	26	29	16	17
<i>Luscinia megarhynchos</i>		1		3	2	1
<i>Motacilla flava</i>	6	1	7	11	12	16
<i>Passer montanus</i>	51	72	56	74	49	69
<i>Phoenicurus phoenicurus</i>	1	5	6	3	4	4
<i>Picus viridis</i>	3	1	2	4	3	8
<i>Saxicola rubetra</i>		3				
<i>Saxicola torquatus</i>	16	22	16	23	21	25
<i>Serinus serinus</i>	11	21	18	22	16	27
<i>Streptopelia turtur</i>	2	3	3	3	1	6
<i>Sturnus vulgaris</i>	67	95	79	79	101	382
<i>Sylvia communis</i>	4	7	7	1	5	7
<i>Upupa epops</i>			1			
<i>Vanellus vanellus</i>	3	23	18	7	16	6

sre						
Vrsta	2007	2008	2009	2010	2011	2012
<i>Acrocephalus palustris</i>		2	7	3	3	3
<i>Alauda arvensis</i>	4	7	5	19	17	13
<i>Anthus trivialis</i>	1	3	4	4	2	4
<i>Carduelis cannabina</i>	2	7	5	6	1	3
<i>Carduelis carduelis</i>	19	34	33	27	28	37
<i>Columba palumbus</i>		1		10	2	8
<i>Emberiza calandra</i>	3	43	33	41	37	44
<i>Emberiza cirius</i>	23	79	80	71	82	79
<i>Emberiza citrinella</i>	14	14	19	19	11	8
<i>Falco tinnunculus</i>		3		4	1	
<i>Galerida cristata</i>		4	6	9	11	8
<i>Hirundo rustica</i>	28	54	46	71	59	99
<i>Jynx torquilla</i>	3	36	34	39	37	37
<i>Lanius collurio</i>	18	45	52	37	26	38
<i>Lullula arborea</i>	19	51	52	61	53	49
<i>Luscinia megarhynchos</i>	56	108	106	98	106	150
<i>Passer montanus</i>	17	68	36	51	61	71
<i>Phoenicurus phoenicurus</i>	1	1	3	5	1	8
<i>Picus viridis</i>	9	28	31	40	25	39
<i>Saxicola rubetra</i>		2			1	1
<i>Saxicola torquatus</i>	5	7	10	16	17	11
<i>Serinus serinus</i>	27	79	84	89	65	83
<i>Streptopelia turtur</i>	7	16	8	8	5	5
<i>Sturnus vulgaris</i>	34	238	122	112	100	117
<i>Sylvia communis</i>	9	14	18	18	12	14
<i>Upupa epops</i>	2	19	11	4	15	14
<i>Vanellus vanellus</i>				1		

int						
Vrsta	2007	2008	2009	2010	2011	2012
<i>Acrocephalus palustris</i>	23	36	23	23	27	8
<i>Alauda arvensis</i>	74	147	129	115	109	96
<i>Anthus trivialis</i>	9	1	7	3	2	3
<i>Carduelis cannabina</i>	8	34	14	12	9	18
<i>Carduelis carduelis</i>	11	18	19	14	13	16
<i>Columba oenas</i>	3	8	3	18	16	14
<i>Columba palumbus</i>	23	42	29	38	40	35
<i>Emberiza calandra</i>	1		1	4		2
<i>Emberiza citrinella</i>	62	81	54	51	48	48
<i>Falco tinnunculus</i>	14	36	22	31	29	26
<i>Galerida cristata</i>	6	45	22	20	16	31
<i>Hirundo rustica</i>	143	151	93	91	100	80
<i>Jynx torquilla</i>	4	5	6	5	4	1
<i>Lanius collurio</i>	23	34	21	22	11	10
<i>Luscinia megarhynchos</i>	19	16	19	24	28	18
<i>Motacilla flava</i>	8	22	25	27	34	31
<i>Passer montanus</i>	97	183	111	173	130	93
<i>Phoenicurus phoenicurus</i>		1	2			
<i>Picus viridis</i>	3	1		2	2	5
<i>Saxicola rubetra</i>		1			3	
<i>Saxicola torquatus</i>	34	63	61	52	58	63
<i>Serinus serinus</i>	20	57	32	39	33	21
<i>Streptopelia turtur</i>	7	7	4	7	3	7
<i>Sturnus vulgaris</i>	237	254	122	153	203	346
<i>Sylvia communis</i>	6	16	14	13	18	20
<i>Upupa epops</i>		4	1			
<i>Vanellus vanellus</i>	15	67	36	33	43	32

moz						
Vrsta	2007	2008	2009	2010	2011	2012
<i>Acrocephalus palustris</i>	41	36	29	17	21	18
<i>Alauda arvensis</i>	2	12	6	4		5
<i>Anthus trivialis</i>	4	16	13	12	4	10
<i>Carduelis cannabina</i>	8	20	10	7	7	3
<i>Carduelis carduelis</i>	34	60	51	39	38	78
<i>Columba oenas</i>	2	4	10	8	2	14
<i>Columba palumbus</i>	30	101	77	73	75	67
<i>Emberiza calandra</i>	2	3	3	5		
<i>Emberiza cirrus</i>		2				
<i>Emberiza citrinella</i>	36	131	113	104	81	108
<i>Falco tinnunculus</i>	14	35	25	21	25	23
<i>Galerida cristata</i>	2	1	3			1
<i>Hirundo rustica</i>	104	216	158	133	141	197
<i>Jynx torquilla</i>	12	35	38	26	23	31
<i>Lanius collurio</i>	40	76	76	75	44	50
<i>Lullula arborea</i>		6	2	1		2
<i>Luscinia megarhynchos</i>		1		3	3	1
<i>Passer montanus</i>	113	305	236	176	205	193
<i>Phoenicurus phoenicurus</i>	19	26	28	16	16	17
<i>Picus viridis</i>	14	27	27	23	22	26
<i>Saxicola rubetra</i>		4	1		5	2
<i>Saxicola torquatus</i>	53	73	50	58	55	49
<i>Serinus serinus</i>	54	108	84	84	55	67
<i>Streptopelia turtur</i>	2	21	22	13	5	16
<i>Sturnus vulgaris</i>	233	485	437	332	370	379
<i>Sylvia communis</i>	17	42	38	35	26	15
<i>Upupa epops</i>		10	8	2	3	5
<i>Vanellus vanellus</i>	4		3	3		

sno						
Vrsta	2007	2008	2009	2010	2011	2012
<i>Acrocephalus palustris</i>		2	7	3	3	3
<i>Alauda arvensis</i>		4	3	18	16	13
<i>Anthus trivialis</i>				2	2	4
<i>Carduelis cannabina</i>	1	7	5	6	1	3
<i>Carduelis carduelis</i>	19	29	30	24	23	32
<i>Columba palumbus</i>		1		10	2	7
<i>Emberiza calandra</i>	2	32	24	32	33	40
<i>Emberiza cirrus</i>	21	70	66	63	71	66
<i>Emberiza citrinella</i>				4		
<i>Falco tinnunculus</i>		3		4	1	
<i>Galerida cristata</i>		4	6	9	11	8
<i>Hirundo rustica</i>	26	47	34	62	43	72
<i>Jynx torquilla</i>	2	30	24	31	31	31
<i>Lanius collurio</i>	16	34	46	33	23	37
<i>Lullula arborea</i>	12	35	34	53	47	44
<i>Luscinia megarhynchos</i>	55	101	105	96	103	148
<i>Passer montanus</i>	17	54	33	48	61	68
<i>Phoenicurus phoenicurus</i>	1	1	3	4	1	7
<i>Picus viridis</i>	9	26	27	40	23	34
<i>Saxicola rubetra</i>		2			1	1
<i>Saxicola torquatus</i>	5	7	10	15	17	11
<i>Serinus serinus</i>	26	66	75	74	60	73
<i>Streptopelia turtur</i>	7	16	7	5	3	3
<i>Sturnus vulgaris</i>	32	228	115	109	97	108
<i>Sylvia communis</i>	4		3	8	6	9
<i>Upupa epops</i>	1	13	3	3	11	10
<i>Vanellus vanellus</i>				1		

str						
Vrsta	2007	2008	2009	2010	2011	2012
<i>Alauda arvensis</i>	15	52	46	11	10	4
<i>Anthus trivialis</i>	10	22	28	6	10	4
<i>Carduelis cannabina</i>	2	16	3			
<i>Carduelis carduelis</i>	3	13	12	6	8	9
<i>Columba palumbus</i>	3	4	2	3		2
<i>Emberiza calandra</i>	11	41	39	17	12	16
<i>Emberiza cirrus</i>	2	13	19	19	18	20
<i>Emberiza citrinella</i>	19	32	29	24	16	12
<i>Falco tinnunculus</i>	1	3		1		
<i>Hirundo rustica</i>	20	17	15	13	22	32
<i>Jynx torquilla</i>	4	13	16	10	8	6
<i>Lanius collurio</i>	9	52	35	10	18	15
<i>Lullula arborea</i>	17	48	39	19	15	10
<i>Luscinia megarhynchos</i>	1	8	1	2	3	2
<i>Passer montanus</i>	2	19	5	3		3
<i>Phoenicurus phoenicurus</i>	3	1	2	2	4	3
<i>Picus viridis</i>		3	6	3	5	6
<i>Saxicola rubetra</i>		2			1	
<i>Saxicola torquatus</i>	1	2	3	2	1	3
<i>Serinus serinus</i>	1	26	15	15	6	13
<i>Streptopelia turtur</i>			1	3	2	2
<i>Sturnus vulgaris</i>	9	21	36	12	4	11
<i>Sylvia communis</i>	11	19	23	10	8	5
<i>Upupa epops</i>	1	9	10	1	4	4

vtr						
Vrsta	2007	2008	2009	2010	2011	2012
<i>Acrocephalus palustris</i>	47	85	73	69	35	45
<i>Alauda arvensis</i>	68	75	56	55	40	54
<i>Anthus trivialis</i>	68	64	67	66	61	54
<i>Carduelis cannabina</i>	15	11	16	12	13	17
<i>Carduelis carduelis</i>	14	28	25	23	10	34
<i>Columba oenas</i>	2	13	11	2	8	6
<i>Columba palumbus</i>	6	13	18	17	14	29
<i>Emberiza calandra</i>	11	24	20	6	2	7
<i>Emberiza cirrus</i>		5				
<i>Emberiza citrinella</i>	39	44	42	37	35	56
<i>Falco tinnunculus</i>	6	8	12	9	11	15
<i>Hirundo rustica</i>	35	61	44	41	60	72
<i>Jynx torquilla</i>	8	11	10	11	13	21
<i>Lanius collurio</i>	23	35	31	30	15	33
<i>Lullula arborea</i>			2			
<i>Luscinia megarhynchos</i>	25	37	50	55	55	37
<i>Motacilla flava</i>	11	12	13	15	14	27
<i>Passer montanus</i>	12	73	92	38	71	67
<i>Phoenicurus phoenicurus</i>		1	1			1
<i>Picus viridis</i>		1	2	2		1
<i>Saxicola rubetra</i>	47	67	73	50	46	38
<i>Saxicola torquatus</i>	10	9	17	8	13	26
<i>Serinus serinus</i>	9	9	14	11	9	16
<i>Streptopelia turtur</i>	2	6	6	6	5	
<i>Sturnus vulgaris</i>	55	158	169	90	47	120
<i>Sylvia communis</i>	32	54	81	49	47	45
<i>Upupa epops</i>	1		1			1
<i>Vanellus vanellus</i>	3	5	2	4	23	21

OMD						
Vrsta	2007	2008	2009	2010	2011	2012
<i>Acrocephalus palustris</i>	68	105	89	77	45	52
<i>Alauda arvensis</i>	90	145	114	89	68	75
<i>Anthus trivialis</i>	79	89	102	76	73	67
<i>Carduelis cannabina</i>	23	52	28	22	17	22
<i>Carduelis carduelis</i>	53	92	98	68	61	115
<i>Columba oenas</i>	2	16	16	10	10	19
<i>Columba palumbus</i>	24	95	73	79	70	86
<i>Emberiza calandra</i>	25	99	86	59	45	61
<i>Emberiza cirlus</i>	19	75	73	72	76	72
<i>Emberiza citrinella</i>	75	168	138	125	95	138
<i>Falco tinnunculus</i>	15	36	27	23	26	27
<i>Galerida cristata</i>		3	6	6	9	7
<i>Hirundo rustica</i>	124	271	197	189	222	288
<i>Jynx torquilla</i>	23	74	71	59	61	76
<i>Lanius collurio</i>	66	168	153	113	82	117
<i>Lullula arborea</i>	29	87	74	71	60	55
<i>Luscinia megarhynchos</i>	45	111	114	116	126	147
<i>Motacilla flava</i>	11	12	13	15	14	27
<i>Passer montanus</i>	82	379	284	194	262	260
<i>Phoenicurus phoenicurus</i>	15	18	19	10	11	22
<i>Picus viridis</i>	19	45	50	52	40	51
<i>Saxicola rubetra</i>	47	72	74	50	52	40
<i>Saxicola torquatus</i>	42	64	63	56	63	68
<i>Serinus serinus</i>	52	166	130	132	88	119
<i>Streptopelia turtur</i>	9	32	27	20	13	15
<i>Sturnus vulgaris</i>	215	740	594	394	384	455
<i>Sylvia communis</i>	55	104	132	98	82	66
<i>Upupa epops</i>	3	30	21	4	18	19
<i>Vanellus vanellus</i>	6	5	2	5	23	21

ne-OMD						
Vrsta	2007	2008	2009	2010	2011	2012
<i>Acrocephalus palustris</i>	43	54	43	35	41	22
<i>Alauda arvensis</i>	69	145	126	114	107	97
<i>Anthus trivialis</i>	12	14	13	13	6	8
<i>Carduelis cannabina</i>	11	36	20	15	13	19
<i>Carduelis carduelis</i>	28	56	39	38	31	54
<i>Columba oenas</i>	5	9	8	18	16	15
<i>Columba palumbus</i>	38	66	53	62	61	54
<i>Emberiza calandra</i>	2	1	1	5	2	4
<i>Emberiza cirrus</i>	4	15	12	10	13	14
<i>Emberiza citrinella</i>	81	120	100	95	85	86
<i>Falco tinnunculus</i>	20	49	32	43	40	37
<i>Galerida cristata</i>	8	47	25	23	18	33
<i>Hirundo rustica</i>	204	221	147	151	144	165
<i>Jynx torquilla</i>	7	20	23	24	18	14
<i>Lanius collurio</i>	45	63	56	57	29	28
<i>Lullula arborea</i>		2	3	2	2	1
<i>Luscinia megarhynchos</i>	55	52	61	64	66	59
<i>Motacilla flava</i>	8	22	25	27	34	31
<i>Passer montanus</i>	159	255	193	244	205	164
<i>Phoenicurus phoenicurus</i>	8	12	17	12	10	6
<i>Picus viridis</i>	7	13	12	18	12	21
<i>Saxicola rubetra</i>		4			4	1
<i>Saxicola torquatus</i>	61	90	78	79	81	84
<i>Serinus serinus</i>	58	100	90	91	75	71
<i>Streptopelia turtur</i>	9	18	13	14	5	13
<i>Sturnus vulgaris</i>	351	406	285	302	337	509
<i>Sylvia communis</i>	15	27	27	17	23	28
<i>Upupa epops</i>		6	2	2		1
<i>Vanellus vanellus</i>	16	67	39	36	43	32

GERK						
Vrsta	2007	2008	2009	2010	2011	2012
<i>Acrocephalus palustris</i>	81	119	86	73	51	43
<i>Alauda arvensis</i>	151	232	185	182	158	144
<i>Anthus trivialis</i>	85	62	75	65	50	48
<i>Carduelis cannabina</i>	30	63	37	28	18	31
<i>Carduelis carduelis</i>	44	73	67	50	39	61
<i>Columba oenas</i>	7	25	24	17	21	18
<i>Columba palumbus</i>	53	98	81	95	94	84
<i>Emberiza calandra</i>	18	43	37	22	22	24
<i>Emberiza cirrus</i>	11	18	6	16	13	10
<i>Emberiza citrinella</i>	132	188	158	144	121	140
<i>Falco tinnunculus</i>	29	62	42	50	53	44
<i>Galerida cristata</i>	6	42	22	21	18	27
<i>Hirundo rustica</i>	250	317	188	197	237	191
<i>Jynx torquilla</i>	17	36	32	26	34	31
<i>Lanius collurio</i>	73	122	118	93	50	64
<i>Lullula arborea</i>	18	26	21	17	14	17
<i>Luscinia megarhynchos</i>	41	62	60	77	77	63
<i>Motacilla flava</i>	19	34	38	42	48	58
<i>Passer montanus</i>	188	395	281	258	284	224
<i>Phoenicurus phoenicurus</i>	14	14	16	9	9	7
<i>Picus viridis</i>	14	18	23	22	18	20
<i>Saxicola rubetra</i>	47	69	74	50	47	35
<i>Saxicola torquatus</i>	78	110	100	88	102	104
<i>Serinus serinus</i>	49	101	67	74	66	46
<i>Streptopelia turtur</i>	15	24	15	17	8	11
<i>Sturnus vulgaris</i>	461	720	464	435	439	540
<i>Sylvia communis</i>	48	79	102	72	82	59
<i>Upupa epops</i>	1	18	8	1	6	8
<i>Vanellus vanellus</i>	22	68	39	39	65	50